

# AIR AID®

## INTAKE SYSTEMS

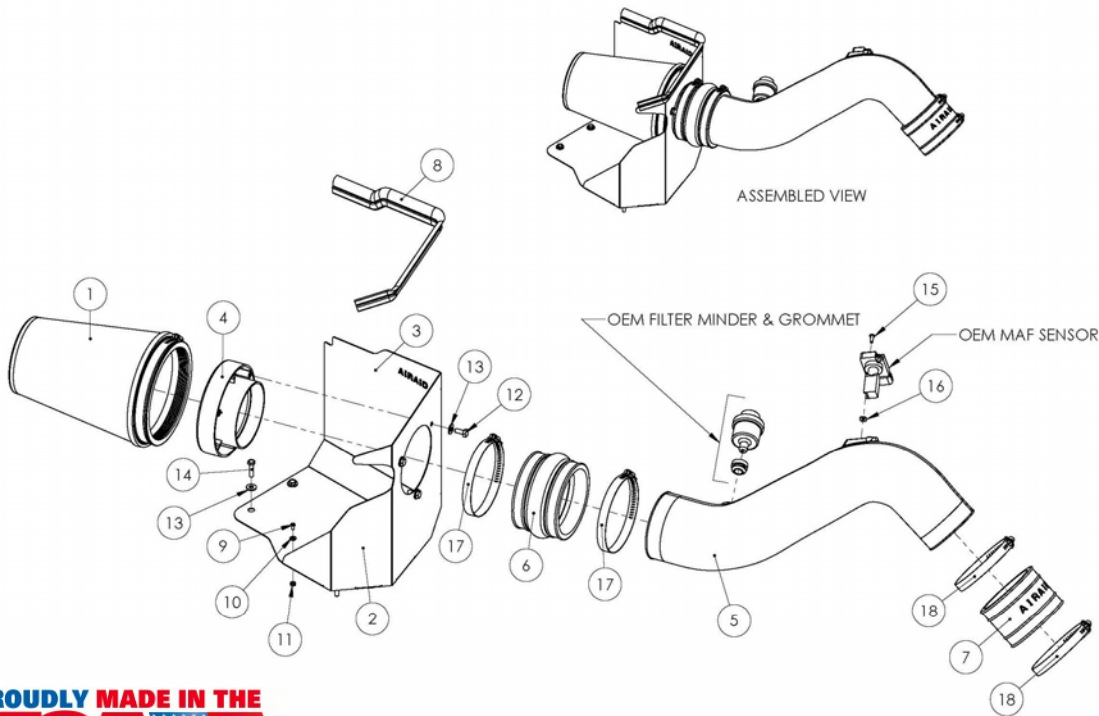
**Installation Instructions**  
**Part Number 200-129**  
**2001-04 Chevy Duramax**  
**2001-04 GMC Duramax**  
**Duramax Diesel 6.6L "LB7"**  
**(Will NOT fit the 2004 "LLY" Engine)**

### Packing List:

#1	700-469	Airaid Premium Filter	1
#2	KIT1121MAFDAC	MAF Panel	1
#3	KIT1121RRDAMC	Rear Air Dam	1
#4	KIT1121MAFADA	Filter Adapter	1
#5	KIT129T	Airaid Intake Tube	1
#6	KITHUMPHS05	Urethane Hump Hose	1
#7	KITCOUPLER01	Urethane Coupler	1
#8	KITWSTRIP02	Weather Strip 19 1/2"	1
	KIT129HP	Hardware & Instructions	1
#9	KIT6C31MXPPZ	6-32 x 5/16" Screw	5
#10	KIT6NWSAPZ	#6 Flat Washer	5
#11	KIT6CNKEPZ	6-32 Keps Nut	5
#12	KIT25C62HCSS	1/4 - 20 x 5/8" Hex Bolt	3
#13	KIT09FWZ019	1/4" Flat Washer	7
#14	KIT60C250HCS	M6-1x 25 Hex Bolt	4
#15	KIT10BHCP50	8-32 x 1/2" Button Head	2
#16	KIT10ANSSWAS	Steel Washer	2
#17	KITHS72	#72 Hose Clamp	2
#18	KITHS60	#60 Hose Clamp	2
	KITBIT#T20	T20 Security Bit	1

### Tools Required For Installation:

Flat Head Screwdriver  
 5/16", 1/4", 10mm Socket  
 Ratchet and Extension  
 3/32" Allen Wrench  
 #T20 Security Bit (Included)



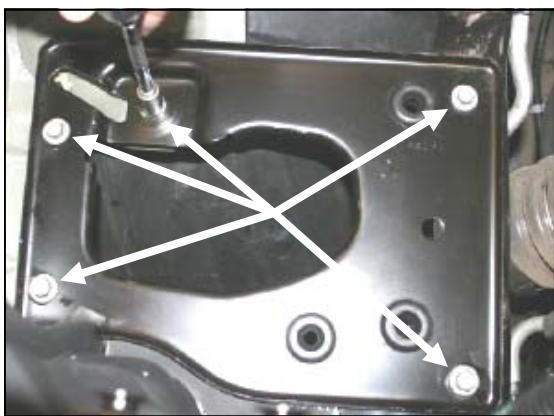
**1. Disconnect the negative battery cable.**  
**A.)** Disconnect the Mass Air Flow (M.A.F.) sensor wiring harness. Using the supplied T-20 Security bit, remove the two screws and the M.A.F. sensor from the tube (save the sensor for reuse).  
**B.)** Loosen the hose clamps on each end of the factory intake tube assembly.



**2.** Remove the factory filter minder and grommet from the side of the factory airbox (save for reuse).



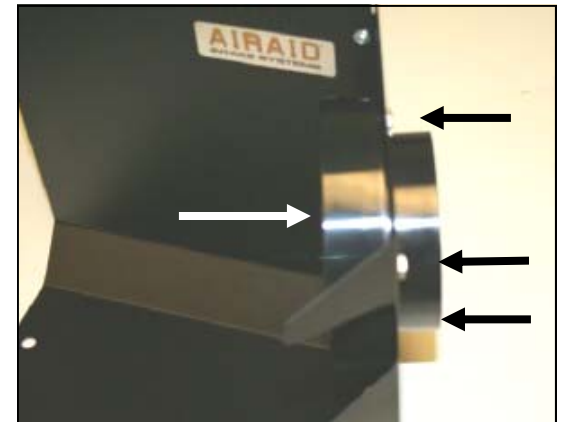
**3.** Remove the factory intake tube assembly from the engine. Rock the factory air box back and forth and remove it from the vehicle. There are only grommets holding it in, no bolts.



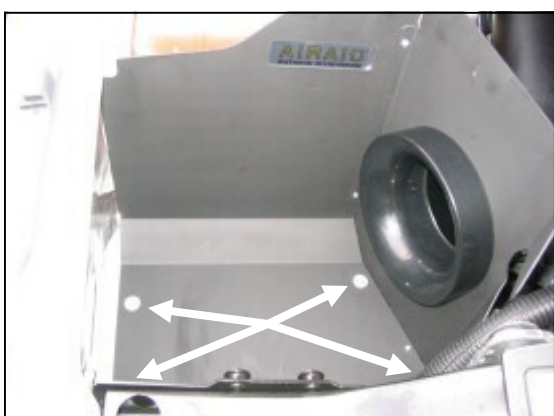
**4.** Using a 10mm socket, remove the five bolts and mounting plate from the engine compartment.



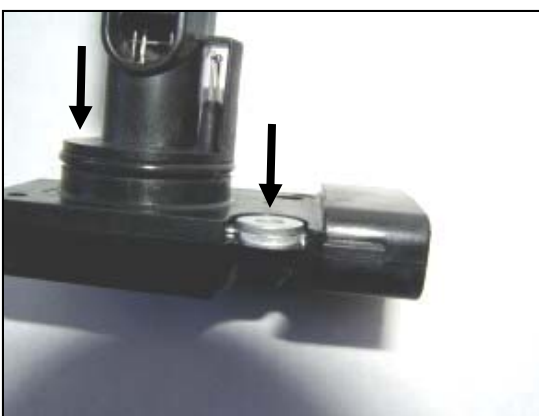
**5.** Assemble the Airaid Cool Air Dam panels (#2, #3) using five 6-32 x 5/16" screws (#9), #6 flat washers (#10) and 6/32 keps nuts (#11).



**6.** Using three 1/4-20 x 5/8" hex bolts (#12) and 1/4" flat washers (#13), install the filter adapter (#4) onto the Airaid Cool Air Dam.



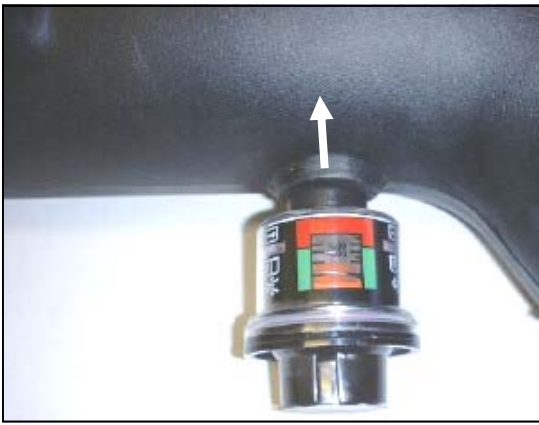
**7.** Install the Airaid Cool Air Dam assembly in the engine compartment using four M6-1x25 hex bolts (#14) and 1/4" flat washers (#13).



**8.** Place two steel washers (#16) into the recessed portions of the MAF sensor mounting holes.



**9.** Using two 8-32 x 1/2" button head screws (#15) install the factory M.A.F. sensor in the Airaid intake tube (#5) **DO NOT USE THE FACTORY SCREWS!** (Note: Sensor must be installed in the direction shown in the picture, with steel washers between it and the tube.)



**10.** Install the factory rubber grommet and air filter minder into the Airaid intake tube.



**11.** Install the urethane hump hose (#6) and two #72 hose clamps (#17) onto the large end of the Airaid intake tube. (*Note: Leave hose clamps loose until final assembly.*)



**12.** Install the urethane coupler (#7) and two #60 hose clamps (#18) onto the small end of the Airaid intake tube. (*Note: Leave hose clamps loose until final assembly.*)



**13.** A.) Install the hump hose end of the Airaid intake tube assembly onto the filter adapter first. B.) Slip the coupler end of the tube over the factory turbocharger inlet. Adjust for fit, and tighten the hose clamps. (*Note: There should be a gap between the Airaid intake tube and the air filter adapter.*)



**14.** Install the Airaid Premium Filter (#1) onto the filter adapter, and tighten the hose clamp. Install the weather strip (#8) onto the Airaid Cool Air Dam. Reconnect the M.A.F. sensor wiring harness. (*Note: Start from one corner and work your way around to insure proper alignment of the weather strip.*)

**15. Double check your work!** Make sure there is no foreign material in the intake path. Make sure all clamps, hoses, bolts, and screws are tight.

**16. Reconnect the negative battery cable!**

## Before!



## After!



Thank you for purchasing the Airaid Intake System. Contact Airaid @ (800) 498-6951 8:00 AM - 5:00 PM MST weekdays for questions regarding fit or instructions that are not clear to you. Your Airaid Intake System was carefully inspected and packaged. Check that no parts are missing, or were damaged during shipping. If any parts are missing, contact Airaid. The air filter element is protected from direct exposure to water and debris; care should be taken not to drive through deep water. WATER INGESTION IS THE DRIVERS RESPONSIBILITY! The air filter is reusable and should be cleaned using the Airaid Filter Tune-Up Kit periodically.

Included with your Airaid Intake System is a sticker with a California Air Resources Board (C.A.R.B.) Executive Order (EO) number. This sticker must be placed in plain view inside of the engine compartment. Failure to do so may prevent you from passing a smog inspection.

## Don't Forget Your AIRAID Filter Tune-Up Kit!



**P/N 790-551 Aerosol Spray**  
**P/N 790-550 Squeeze**



Instructions Revision  
Date: 11/06/07