

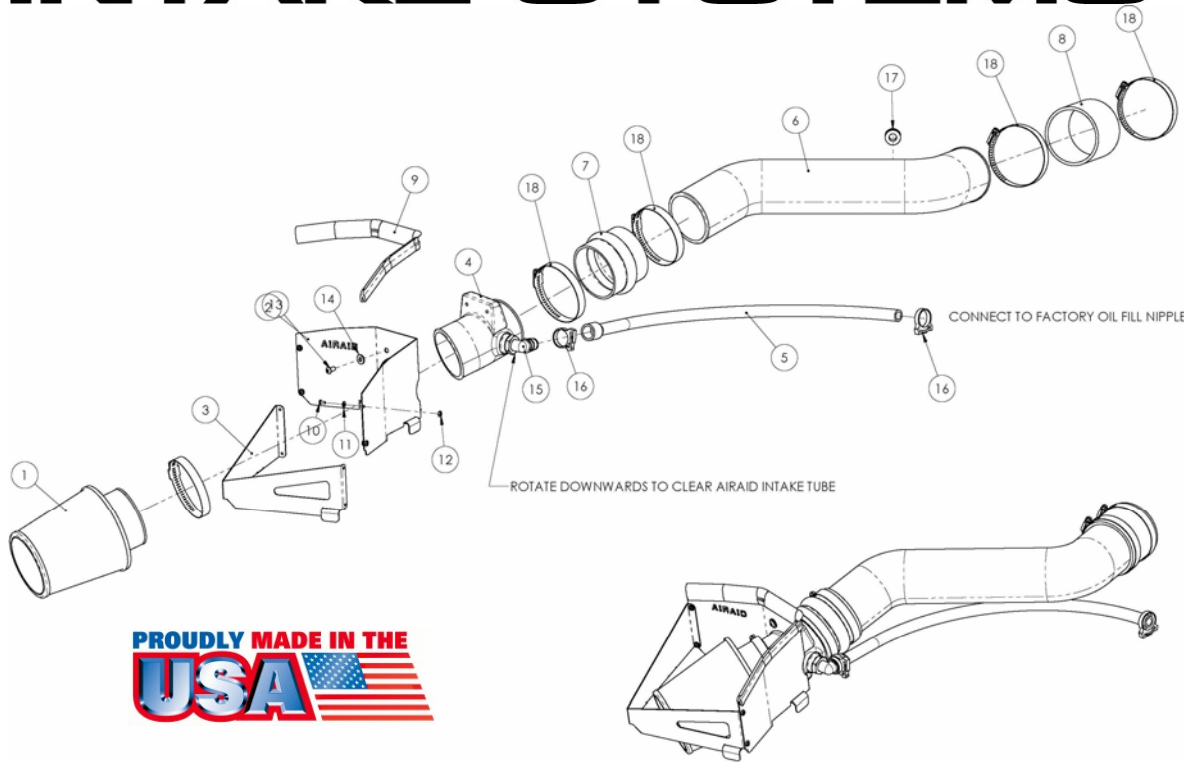
# AIR AID®

## INTAKE SYSTEMS

**Installation Instructions**  
**Part Number 300-156**  
**2004-08 Dodge Durango**  
**5.7L Hemi**

### Packing List:

#1	700-450	Airaid Premium Filter	1
#2	KIT143MAFC	MAF Panel	1
#3	KIT143FPC	Front Panel	1
#4	KIT143A	Air Filter Adapter	1
#5	KITHOSE05	3/4" x 25" Hose	1
#6	KIT943T	Airaid Intake Tube	1
#7	KITHUMPHS03	Urethane Hump Hose	1
#8	KITCOUPLER03	Urethane Coupler	1
#9	KITWSTRIP02	Weather Strip 17 1/4"	1
	KIT156HP	Hardware & Instructions	1
#10	KIT6C31MXPPZ	6-32 x 5/16" Screw	4
#11	KIT6NWSAPZ	#6 Flat Washer	4
#12	KIT6CNKEPZ	6-32 Keps Nut	4
#13	KIT15DHC3050	1/4-20 x 1/2" Button Head Screw	2
#14	KIT09FWZ019	1/4" Flat Washer	2
#15	KITELBOW03	Nylon Fitting	1
#16	KITSNP24GHS	#24 Speed Clamp	2
#17	KITGRMIT03	Rubber Grommet	1
#18	KITHS56	#60 Hose Clamp	4



*Please Note: The C.A.R.B. E.O. for this product is only applicable for 2004 thru 2006 vehicles. All others are pending.*

### Tools Required For Installation:

Flat Blade Screwdriver  
 5/32" Allen Wrench  
 10mm and 13mm Sockets  
 Ratchet & Extension



**1. Disconnect the negative battery cable.**  
 Remove the valve cover breather hose from the factory air box lid. Loosen the hose clamps on both sides of the factory intake tube.



**2.** Unsnap the factory intake tube baffle from the fan shroud and then remove the factory intake tube assembly from the vehicle.



**3.** Unlatch the clips that secure the air box lid to the air box base, and remove the air box lid from the vehicle. Using a 13mm socket, remove the air box base from the engine compartment.



**4.** Using a flat blade screwdriver, carefully un-snap the air box base inlet from the air box base and remove it. Reinstall the factory air box base into the engine compartment without the inlet.



**5.** Carefully disconnect the factory air temperature sensor wiring harness from the sensor in the resonator.



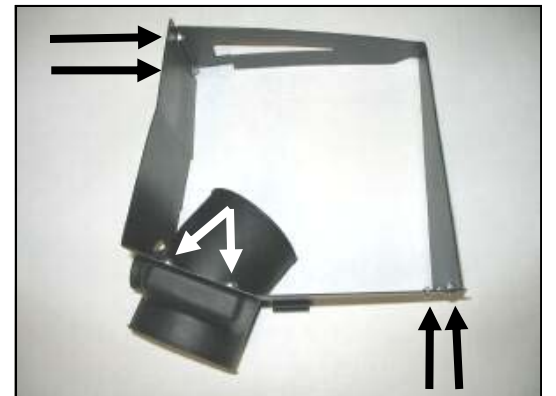
**6.** Remove the oil fill cap from the valve cover. Using a 10mm socket, loosen the two factory resonator bolts. Remove the resonator from the engine and then replace the oil fill cap.



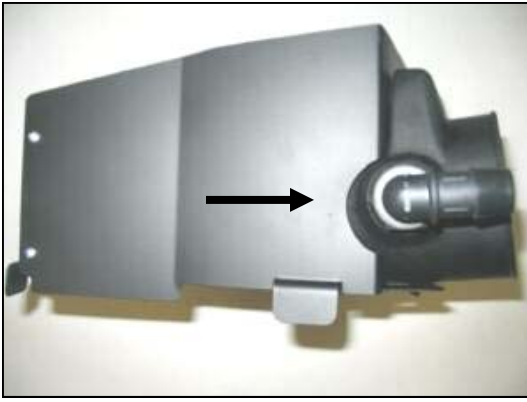
**7.** Remove the factory air temperature sensor from the resonator by turning it counter-clockwise and pulling it straight out (save for reuse).



**8.** Remove the factory rubber seal from the throttle body.



**9.** Assemble the Airaid Quick Fit Panels (#2, #3) using four 6-32x5/16" screws (#10), #6 flat washers (#11), and 6-32 kepsnuts (#12). Next, install the air filter adapter (#4) using two 1/4-20x1/2" button head screws (#13) and 1/4" flat washers (#14).



10. Install the nylon fitting (#15) into the air filter adapter as shown.



11. Install the Quick Fit Panels onto the top of the factory air box base. Relatch the factory clips onto the tabs on the Quick Fit Panels.



12. Remove the factory breather hose. Connect one end of the 3/4" x 25" hose (#5) to the nylon fitting and the other to the oil fill nipple as shown. Secure each end using one #24 Speed Clamp (#16). Adjust the nylon fitting downward to clear the Airaid Intake Tube assembly.



13. Install the rubber grommet (#17) and factory air temperature sensor into the Airaid Intake Tube (#6).



14. Install the urethane hump hose (#7) and urethane coupler (#8) onto the Airaid Intake Tube using four #60 hose clamps (#18). The coupler is positioned on the throttle body end and the hump hose is positioned on the air filter adapter end of the tube.



15. Install the Airaid Intake Tube assembly onto the engine with the hump hose end towards the air filter adapter. Adjust the assembly for fit and then tighten the four hose clamps.



16. Reconnect the factory air temperature sensor wiring harness to the sensor. (It may be necessary on some late model vehicles to untape the wiring harness, extract approximately 2" of wire, and then retape the harness in order for the temperature sensor to be reconnected.)



17. Install the Airaid Premium Filter (#1) onto the end of the air filter adapter. Install the weather strip (#9) onto the top of the Airaid Quick Fit Panels. (Note: start from one end and work your way around to insure proper alignment of the weather strip.)

**18. Double check your work!**  
Make sure there is no foreign material in the intake path. Make sure all clamps, hoses, bolts, and screws are tight.

**19. Reconnect the negative battery cable!**

Included with your Airaid Intake System is a sticker with a California Air Resources Board (C.A.R.B.) Executive Order (EO) number. This sticker must be placed in plain view inside of the engine compartment. Failure to do so may prevent you from passing a smog inspection.

**Before!**



**After!**



Thank you for purchasing the Airaid Intake System. Contact Airaid @ (800) 498-6951 8:00 AM - 5:00 PM MST weekdays for questions regarding fit or instructions that are not clear to you. Your Airaid Intake System was carefully inspected and packaged. Check that no parts are missing, or were damaged during shipping. If any parts are missing, contact Airaid. The air filter element is protected from direct exposure to water and debris; care should be taken not to drive through deep water. WATER INGESTION IS THE DRIVERS RESPONSIBILITY! The air filter is reusable and should be cleaned using the Airaid Filter Tune-Up Kit periodically.



**Don't Forget Your AIRAID Filter Tune-Up Kit!**

P/N 790-551 Aerosol Spray  
P/N 790-550 Squeeze Spray



Instructions Revision  
Date: 01/15/08